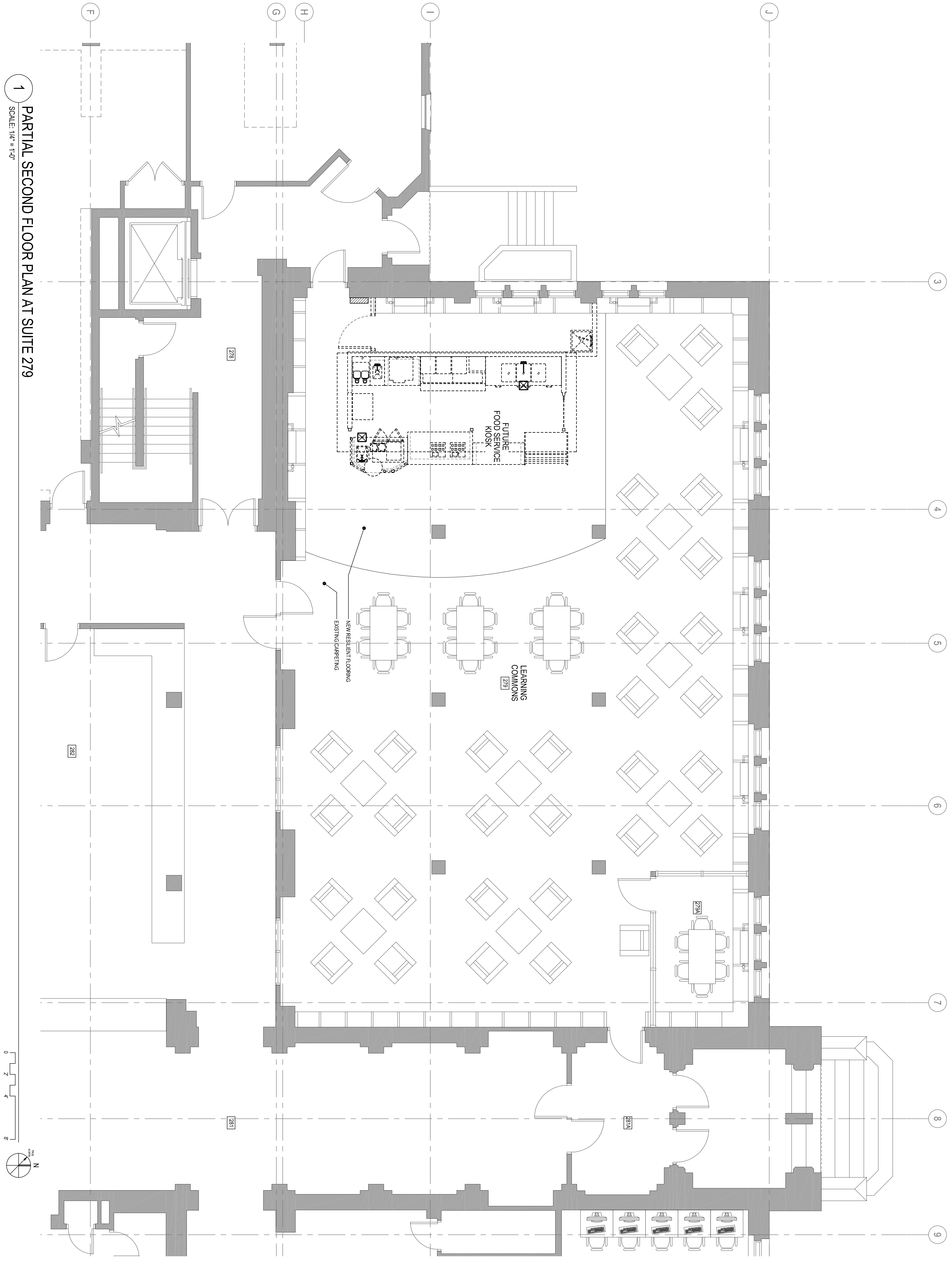


1 PARTIAL SECOND FLOOR PLAN AT SUITE 279
SCALE: 1/4" = 1'-0"



BID SET



RMC Architects, PLLC 1223 Railroad Avenue Bellingham, WA 98225 P:360.676.7733 F:360.738.0448 mc@rmcarchitects.com

HH/WL RENOVATION FOR ATUS WILSON LIBRARY PARTIAL SECOND FLOOR PLANS AT SUITE 279			
Client Review	Maintenance Review	Renovation Review	Approved by
Designed by BPC	Drawn by JTW, PN	Project Manager GA	Date 12-21-09



REV	DATE	DESCRIPTION	BY	APRV

Sheet # AX-XX	Building/Floor WL
Job Number PW620	
Microfile Number	